

3Com Network Jacks require power, which must be purchased separately. Choose from a variety of 3Com solutions supporting two basic power types:

Figure 1: 802.3af Power over Ethernet

- Uses existing LAN cabling—no power adapters needed
- Deploys power from the wiring closet
- Industry-standard power for reliability
- NJ100 and NJ200 models can forward Power over Ethernet to a downstream device
- Some nonstandard VoIP phones can be retrofitted with a power-conversion module.

Figure 2: Local AC power adapter

- Required if Power over Ethernet is unavailable
- Convenient for testing during installation

Figure 1: 3Com sells Power over Ethernet solutions for one or up to twenty-four network jacks

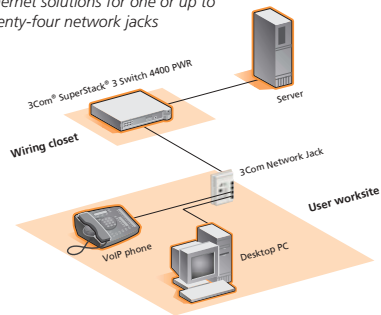
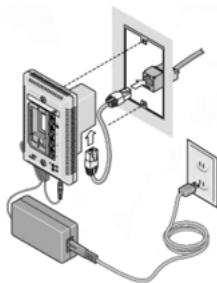


Figure 2: The 3Com AC adapter powers one network jack from a local power outlet



3Com NJ90 Network Jack	3CNJ90
3Com NJ100 Network Jack	3CNJ100-BLK 3CNJ100-CRM
3Com NJ200 Network Jack	3CNJ200-BLK 3CNJ200-CRM
3Com SuperStack 3 Switch 4400 PWR	
Power over Ethernet switch, 24-port	3C17205
3Com Power over Ethernet Multiport Midspan Solution	
Power source, 24-port	3CNJPSE24
3Com Power over Ethernet Single-Port Midspan Solution	
Power source	3CNJPSE
3Com Network Jack AC Power Supply	3CNJPSL
3Com NBX Phone Power Module	
Power converter	3CNJVOIPMOD-NBX

For detailed product and ordering information, please visit www.3com.com/networkjack.



Copyright © 2003 3Com Corporation. All rights reserved. 3Com, the 3Com logo, NBX, and SuperStack are registered trademarks of 3Com Corporation. All other company and product names may be trademarks of their respective companies. While every effort is made to ensure the information given is accurate, 3Com does not accept liability for any errors or mistakes which may arise. Specifications and other information in this document may be subject to change without notice. 102051-001 05/03



FACED WITH ANY OF THESE CONNECTIVITY CHALLENGES?

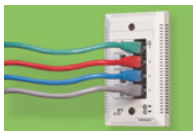


3Com offers a unique “in the wall” solution to your problem of having too few LAN ports for the following situations:

- Upgrading an older building that doesn’t have enough LAN ports
- Creating secure and converged connections for data, voice, and video networks
- Adding network access for new devices and equipment or a growing population of users

The 3Com® Network Jack can help solve these and many other port-expansion challenges. This innovatively designed switch can quadruple your LAN connections “in the wall” while staying out of the way of users and traffic.

An elegant and reliable alternative to a freestanding switch, it fits inside a standard wall cutout. The front faceplate is screwed into the wall, keeping the network jack out of the way and safer from theft.



FEATURES AND BENEFITS

The 3Com Network Jack turns a single LAN uplink cable into four autonegotiating 10/100 Mbps switched ports.

- Drops into standard cutouts without disturbing wall space
- Costs less than Fast Ethernet cabling
- Installation doesn’t disturb business operations
- Wall-mounted, so it’s less vulnerable to damage and theft
- Standard Ethernet switching; supports nearly all networking environments
- Works with Power over Ethernet running over Category 5/5e cabling
- Works with AC power using local adapter
- Optional “pass-through” ports available
- NJ200 supports device discovery and management

Want to know more?
Visit www.3com.com/networkjack

THREE MODELS TO CHOOSE FROM

The unmanaged **3Com NJ90 Network Jack** is the most economical solution for simple port expansion.

The **3Com NJ100 Network Jack** adds the flexibility of pass-through ports and power forwarding.

The **3Com NJ200 Network Jack** is a managed switch with configuration utilities that supports management platforms such as 3Com Network Supervisor and HP OpenView.

	LAN Port Expansion	Pass-Through Ports	SNMP Management
NJ90	✓		
NJ100	✓	✓	
NJ200	✓	✓	✓



NJ200 management interface.

OPTIONAL PASS-THROUGH PORTS

If you have additional cables terminating in the wall, you can use the NJ100 or NJ200 Network Jack’s optional adapter plates to add pass-through ports. These ports work with Avaya-, Panduit-, Hubbell-, AMP-, or Ortronics-brand connectors.

Adapter plates add up to two additional pass-through connections.

